

Er ekki allt í lagi ?

Lýðfræðileg þróun í nokkrum landsbyggðum

Sókn sjávarbyggða. Kemur framtíðin? Koma konurnar?

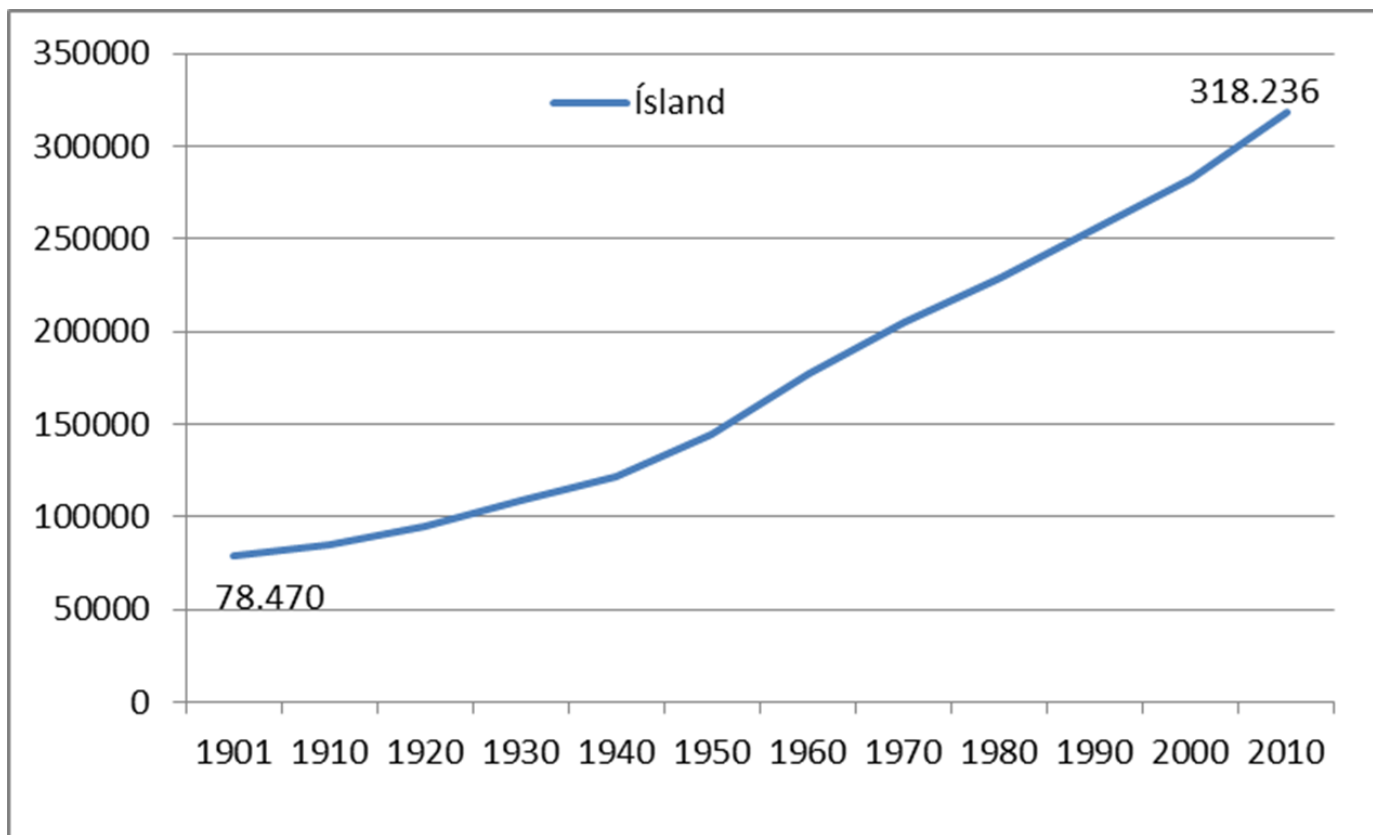
Byggðaráðstefna Íslands 19.-20. september 2014

Sigurður Árnason, sérfræðingur á þróunarsviði

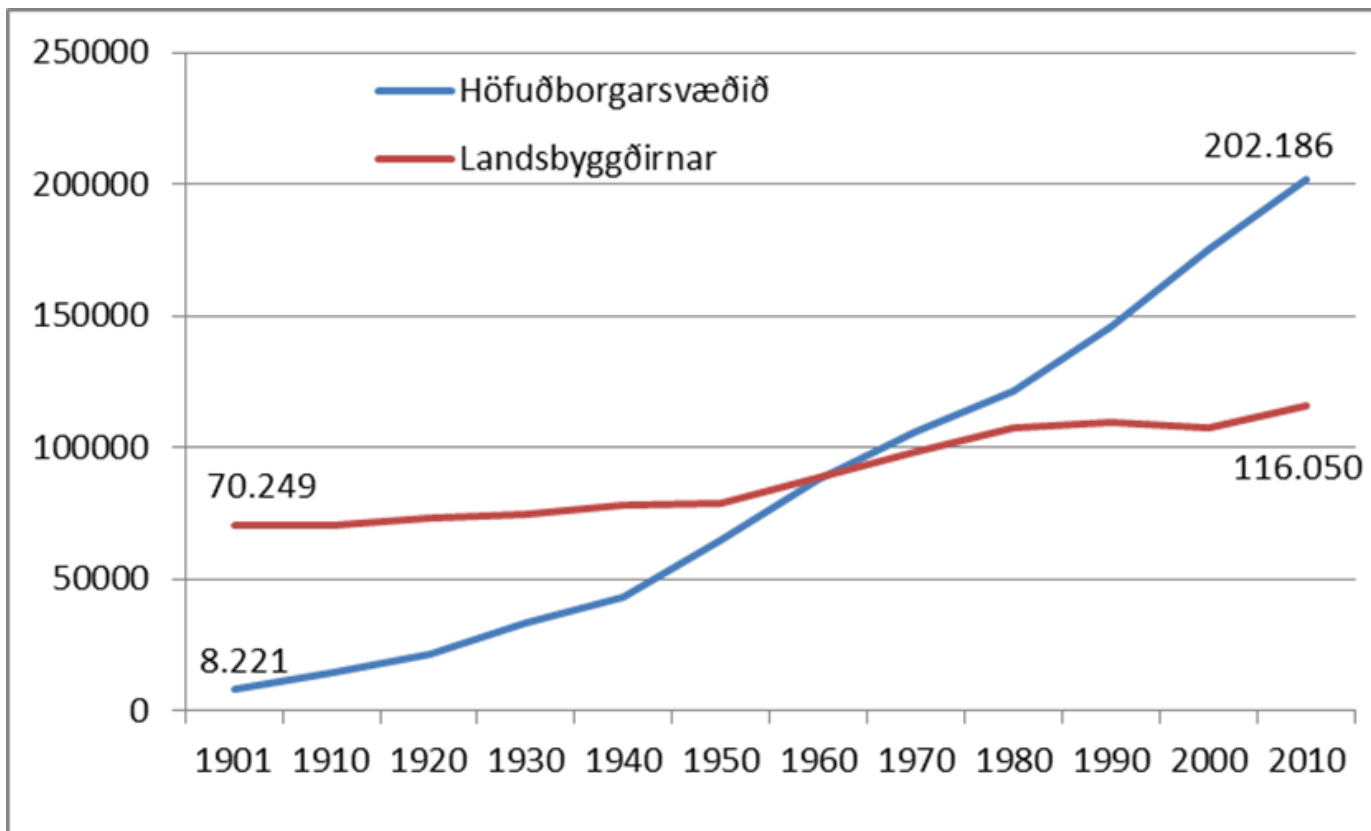


BYGGÐASTOFNUN

Fjórföldun mannfjöldans á rúmri öld

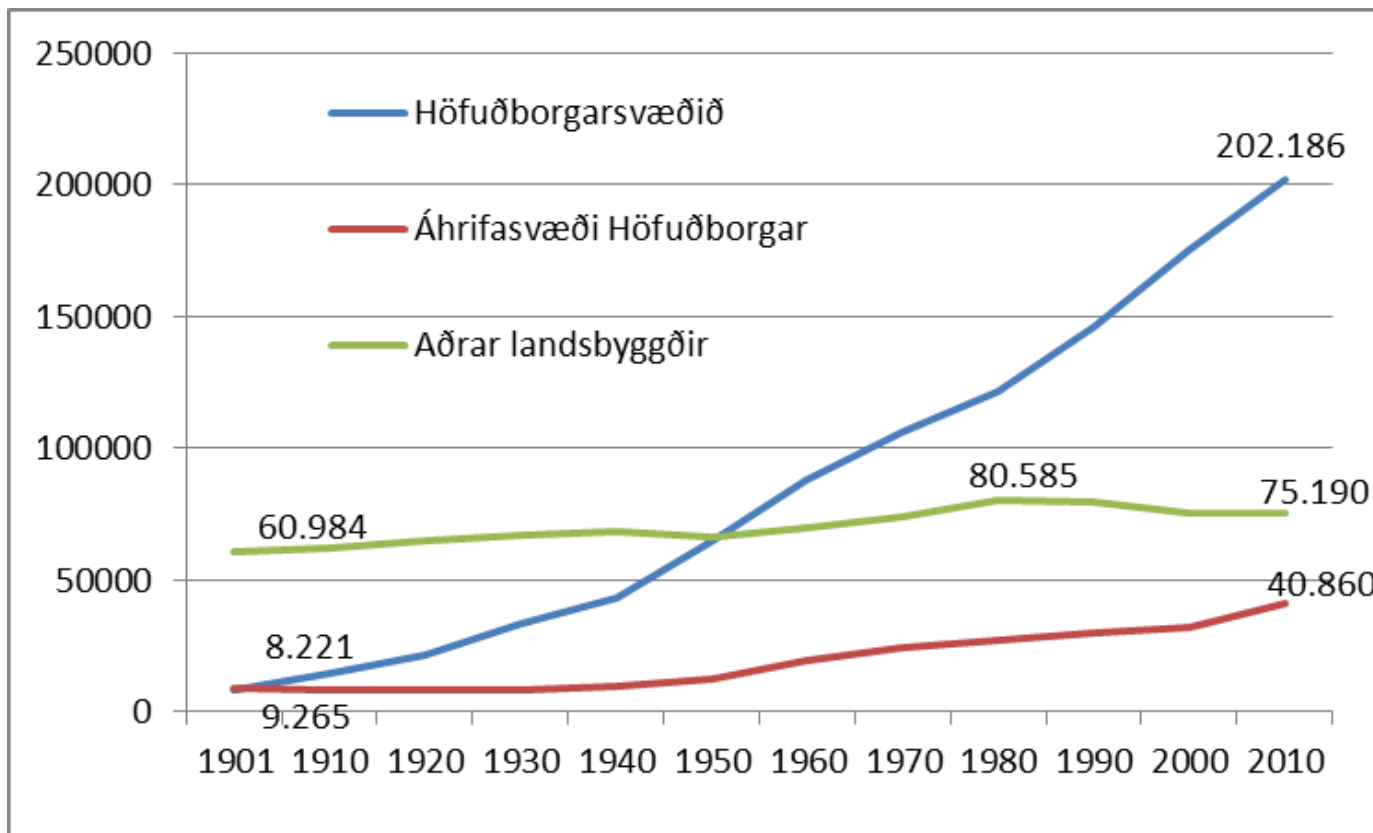


Nærri 25 földun íbúa á höfuðborgarsvæðinu 65% fjölgun í landsbyggðunum

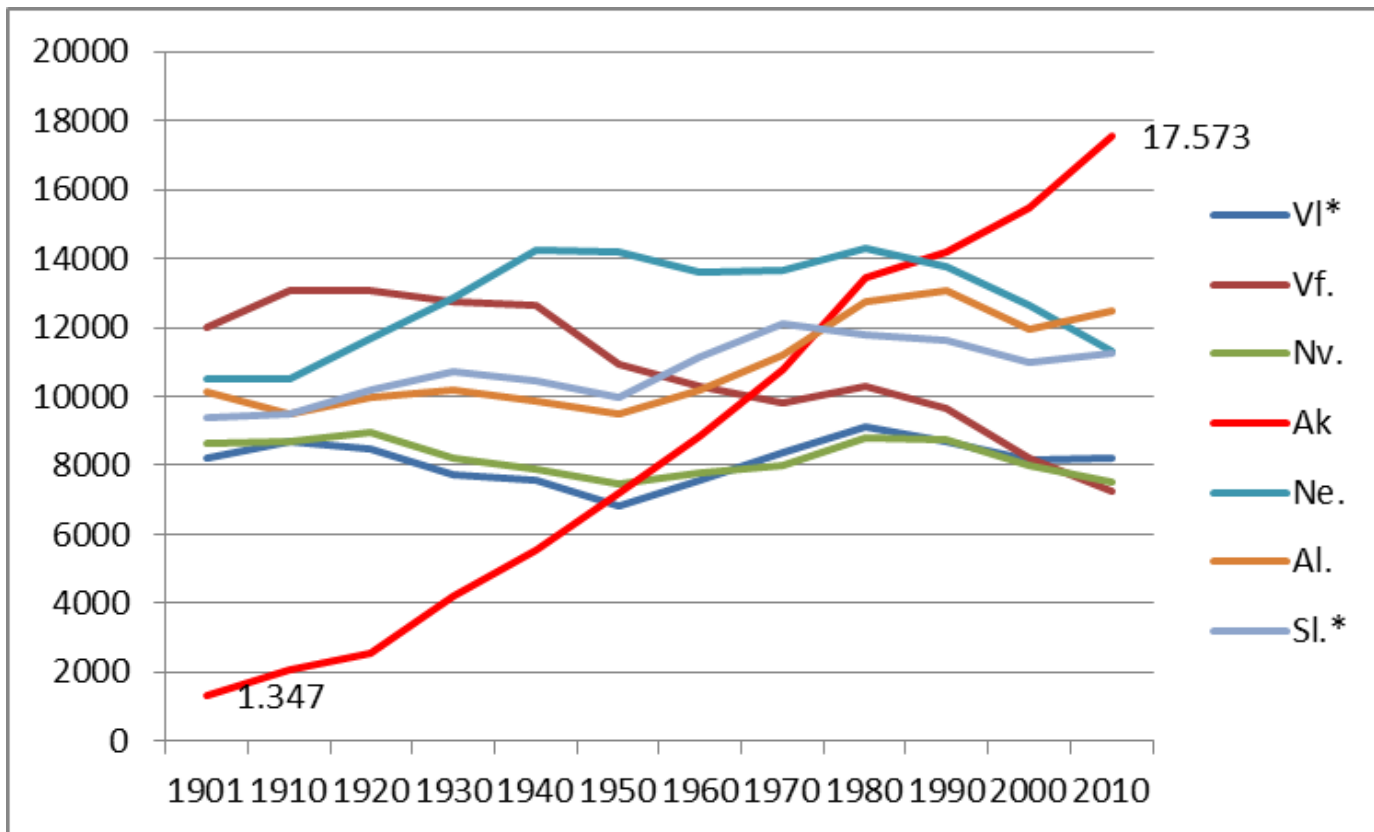


Fjórfröldun íbúa á áhrifasvæði Höfuðborgarinnar

23% fjölgun í öðrum landsbyggðum



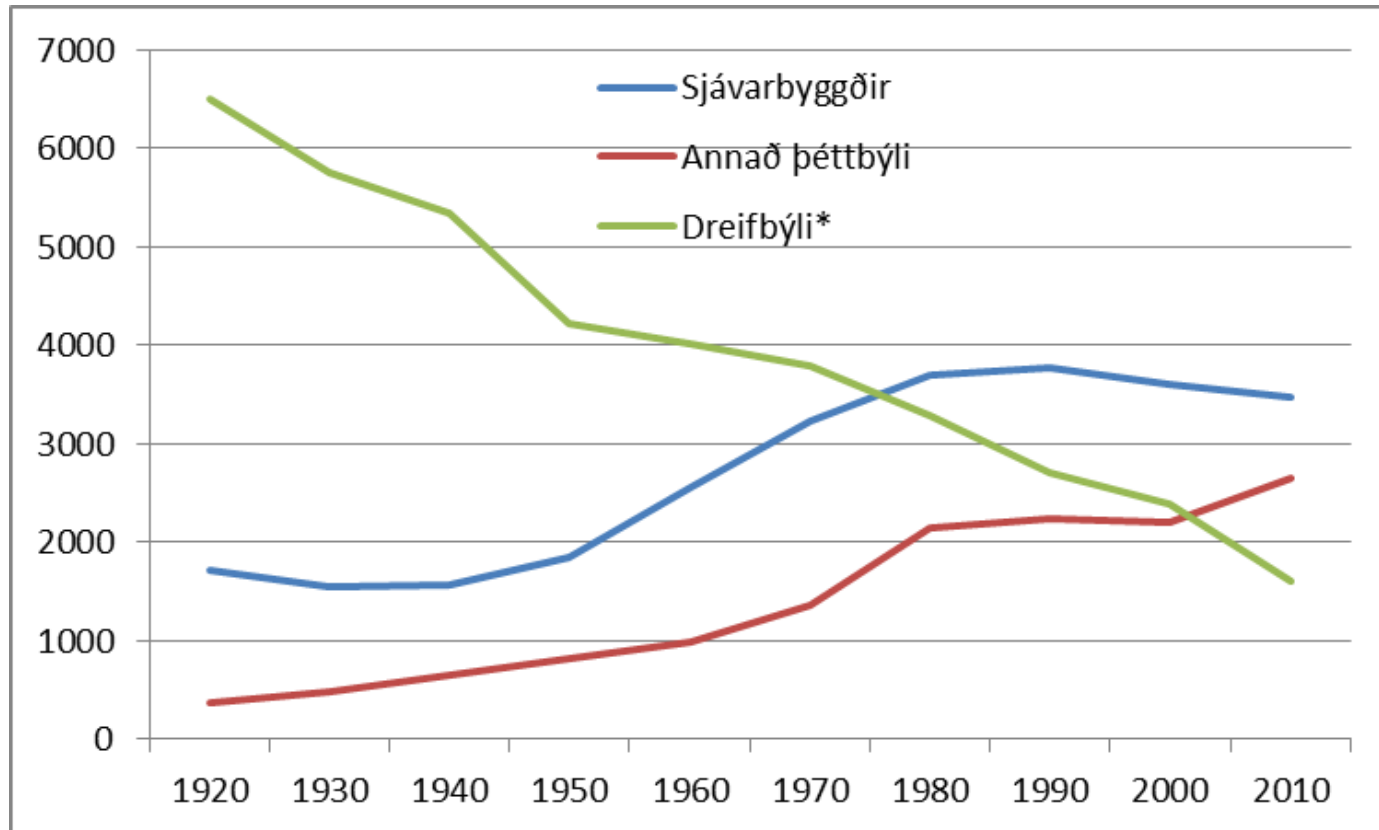
Þrettán sinnum fleiri á Akureyri en 1901



Breyting	
VI*	-0,11%
Vf.	-39,35%
Nv.	-13,39%
Ak	1204,60%
Ne.	7,62%
Al.	23,14%
Sl.*	19,96%



Vesturland norðan Skarðsheiðar

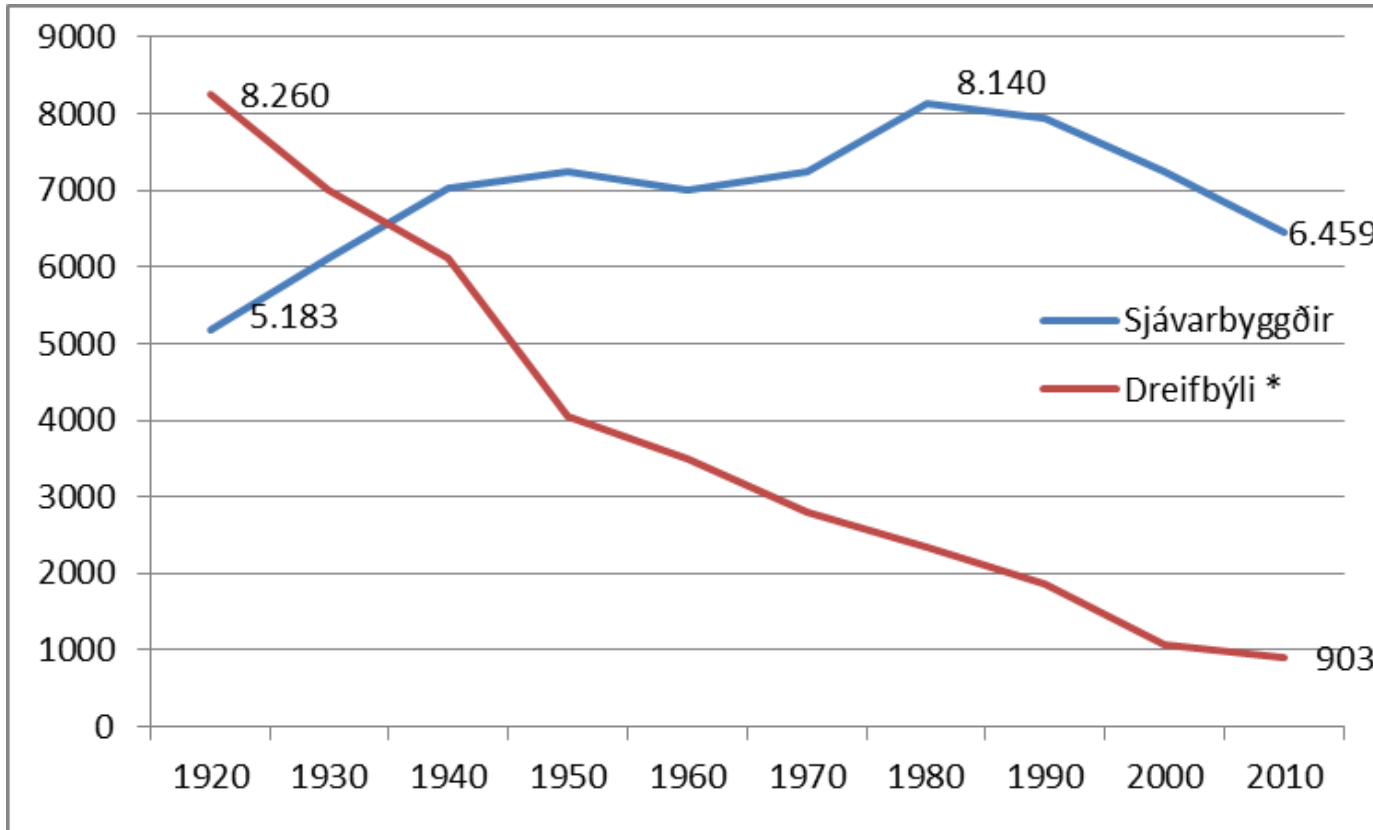


*Bifröst er inni í dreifbýlistölum fyrir 2000



BYGGÐASTOFNUN

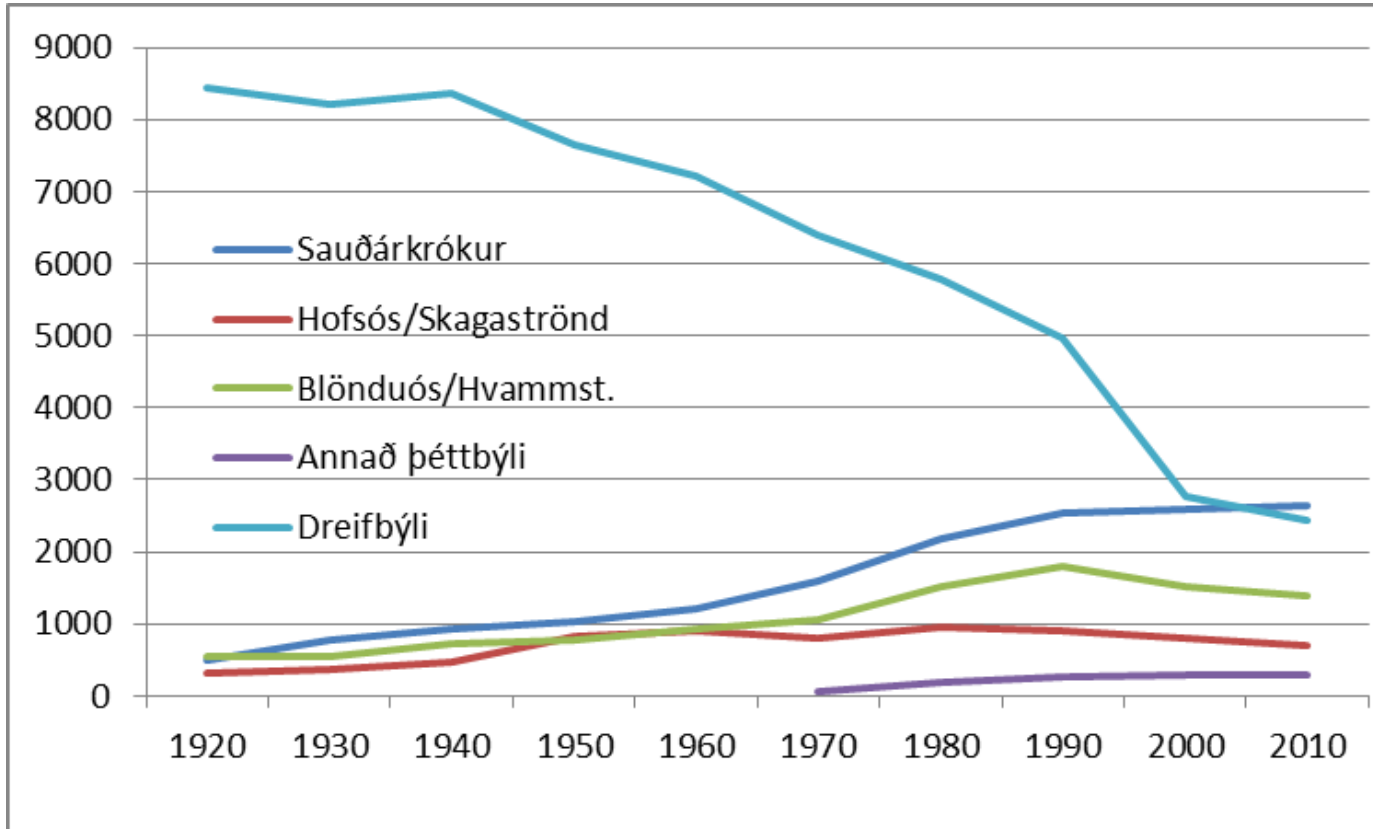
Vestfirðir



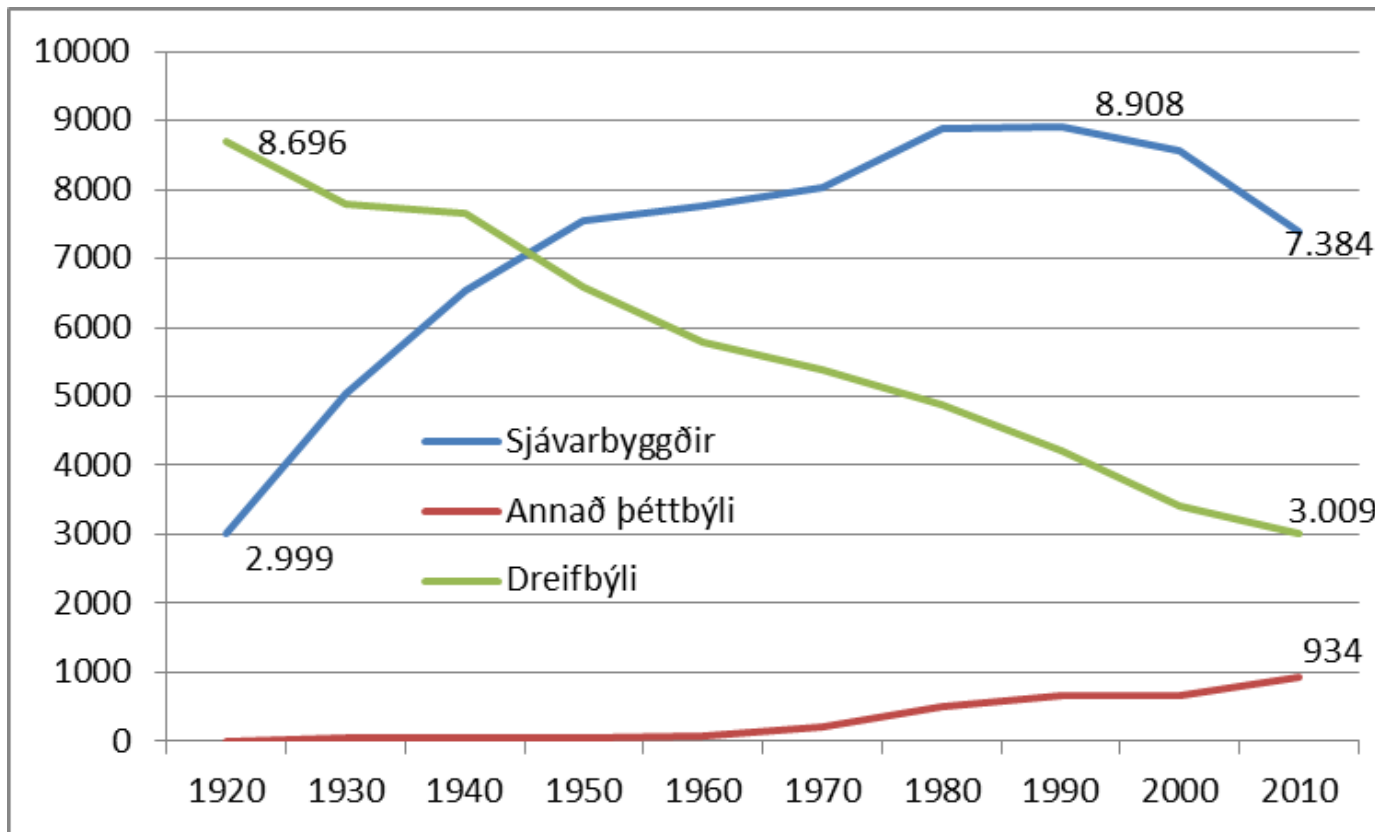
- Reykhólar eru taldir með dreifbýli



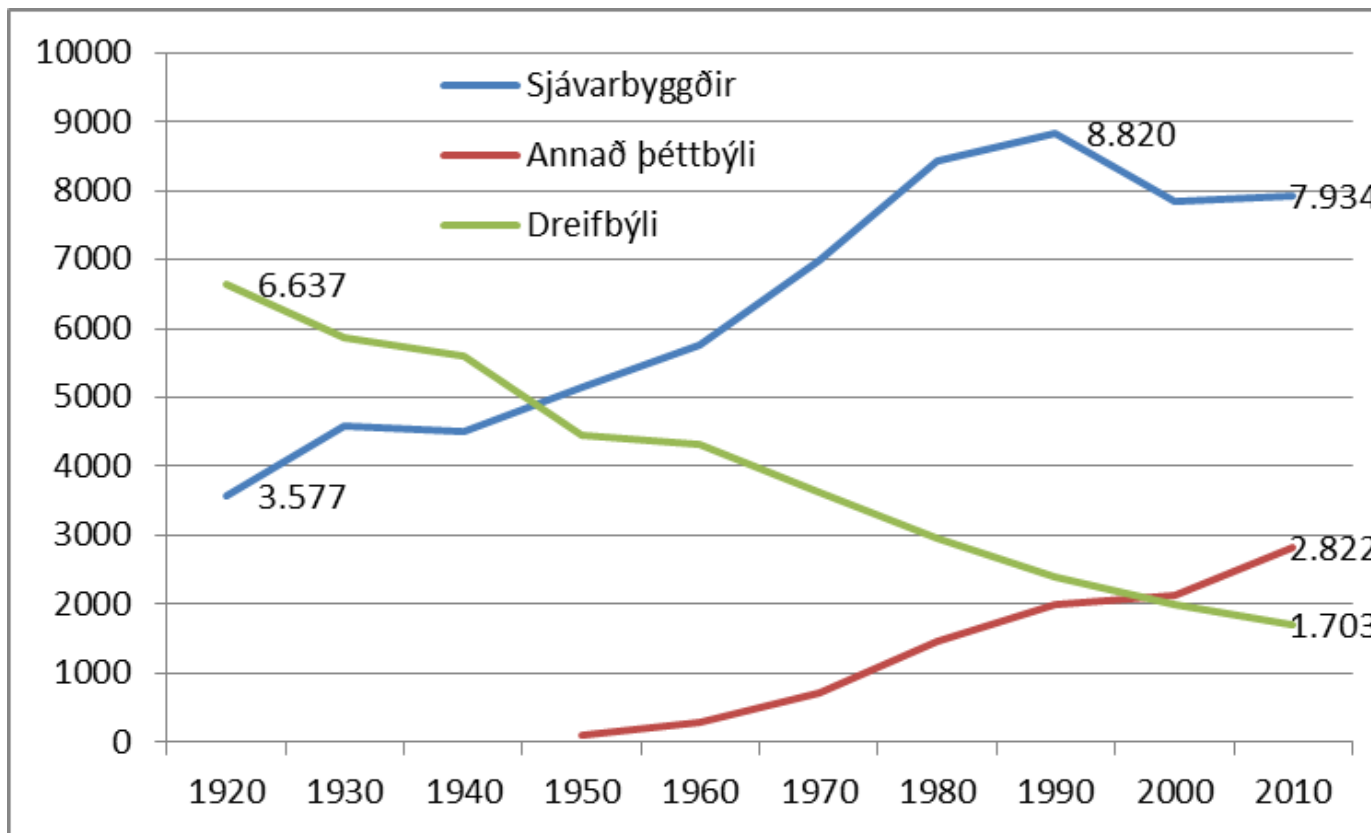
Norðurland vestra



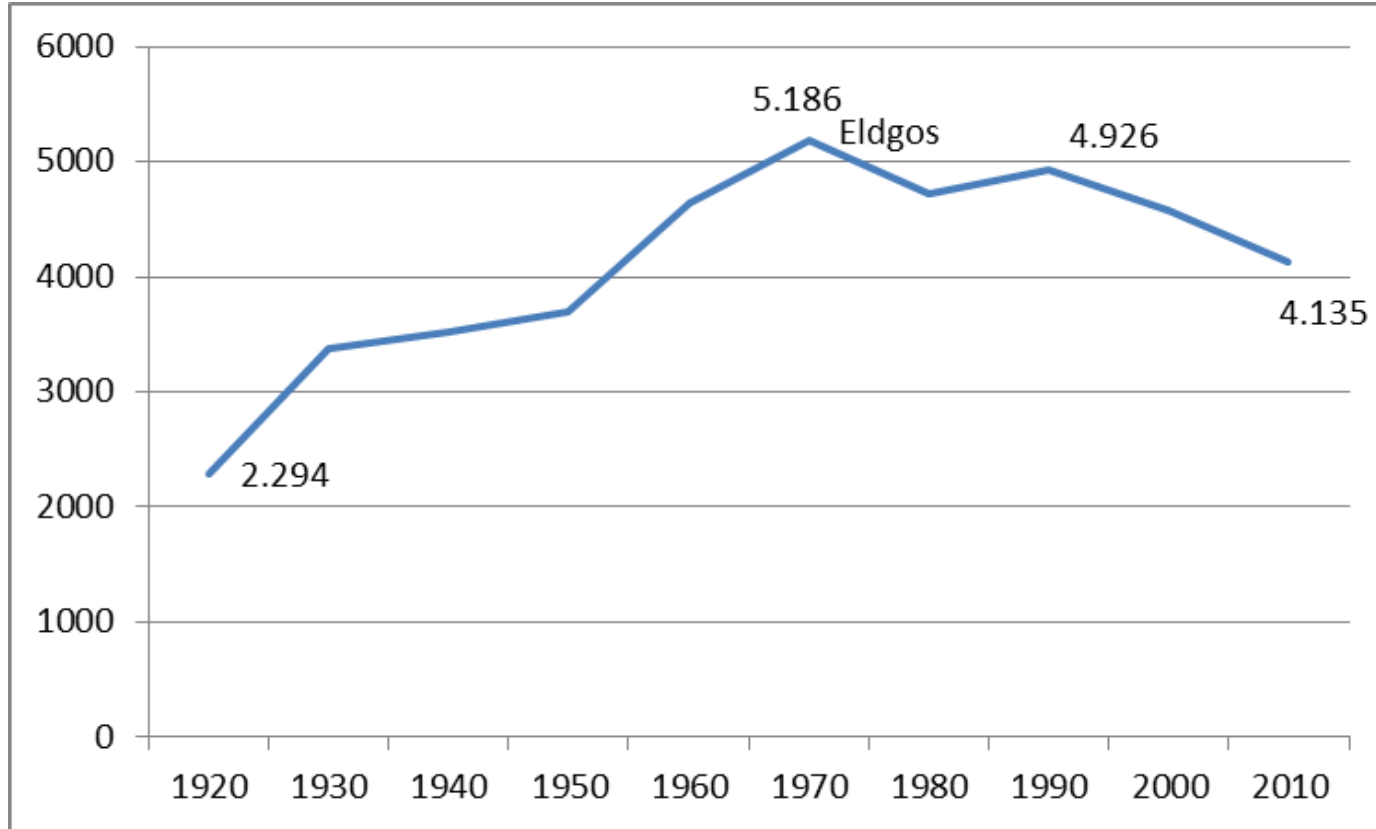
Norðurland eystra án Akureyrar



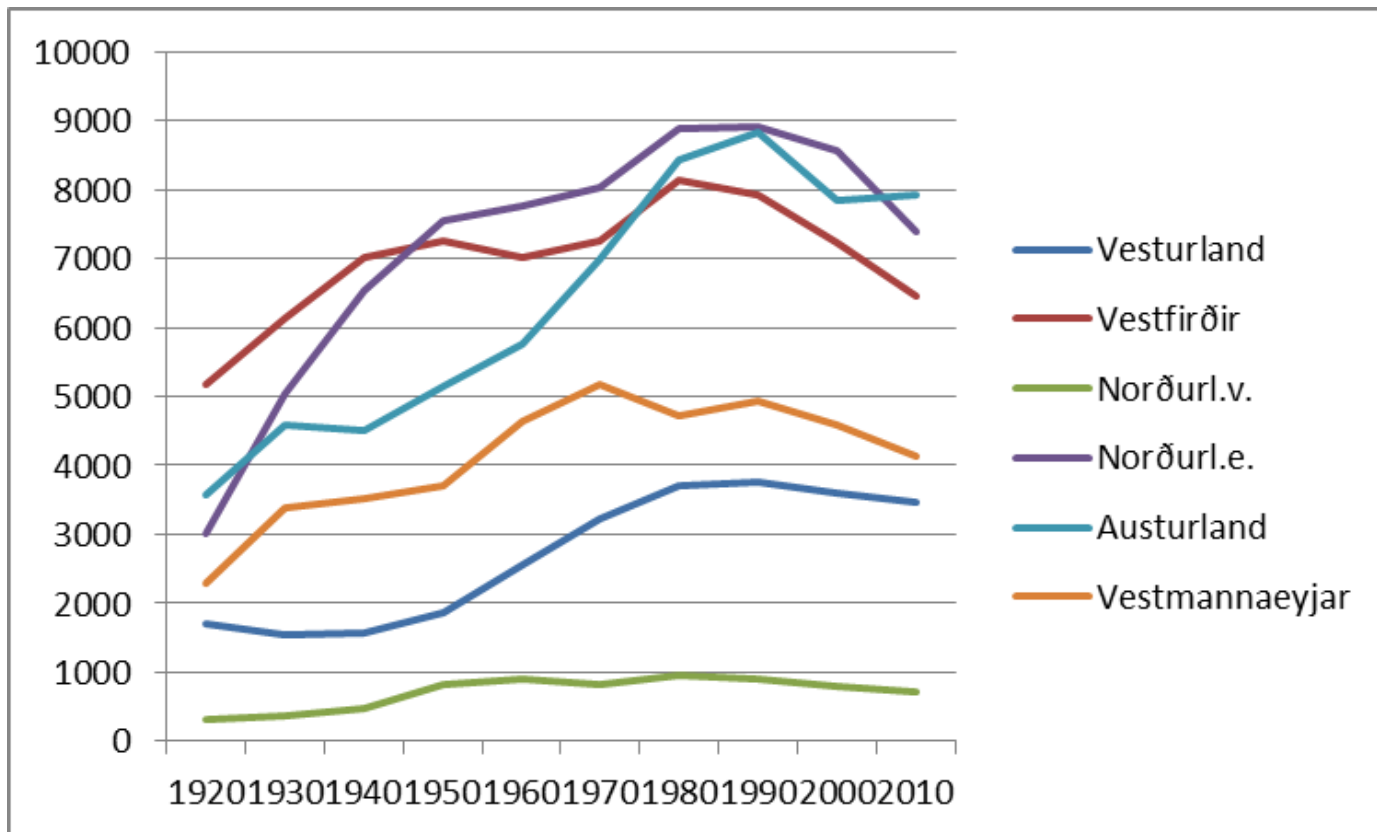
Austurland



Vestmannaeyjar



Þróun sjávarbyggða samantekið



Sjávarbyggðirnar láta undan og þær minni frekar en hinar

	Yfir 1000 íbúar	501-1000 íbúar	251-499 íbúar	250 íbúar eða færri
Fjölgun	Reyðarfjörður 70%	Ólafsvík 2% , Fáskrúðsfjörður 7%		Rif 7% Grenivík 3%
Fækkun innan við 10%	Dalvík, Neskaupstaður Eskifjörður Höfn í Hornafirði	Grundarfjörður Bolungarvík	Hellissandur Djúpivogur	
Fækkun 10-25%	Stykkishólmur	Patreksfjörður Vopnafjörður Seyðisfjörður	Tálknafjörður Suðureyri Hólmavík Skagaströnd Þórshöfn	Súðavík Grimsey Borgarfj. eystri
Fækkun 25%-50%	Siglufjörður	Ólafsfjörður		Bíldudalur Þingeyri Flateyri Drangsnes Hrísey Bakkafjörður Stöðvarfjörður Breiðdalsvík
Fækkun umfram 50%				Raufarhöfn 59%

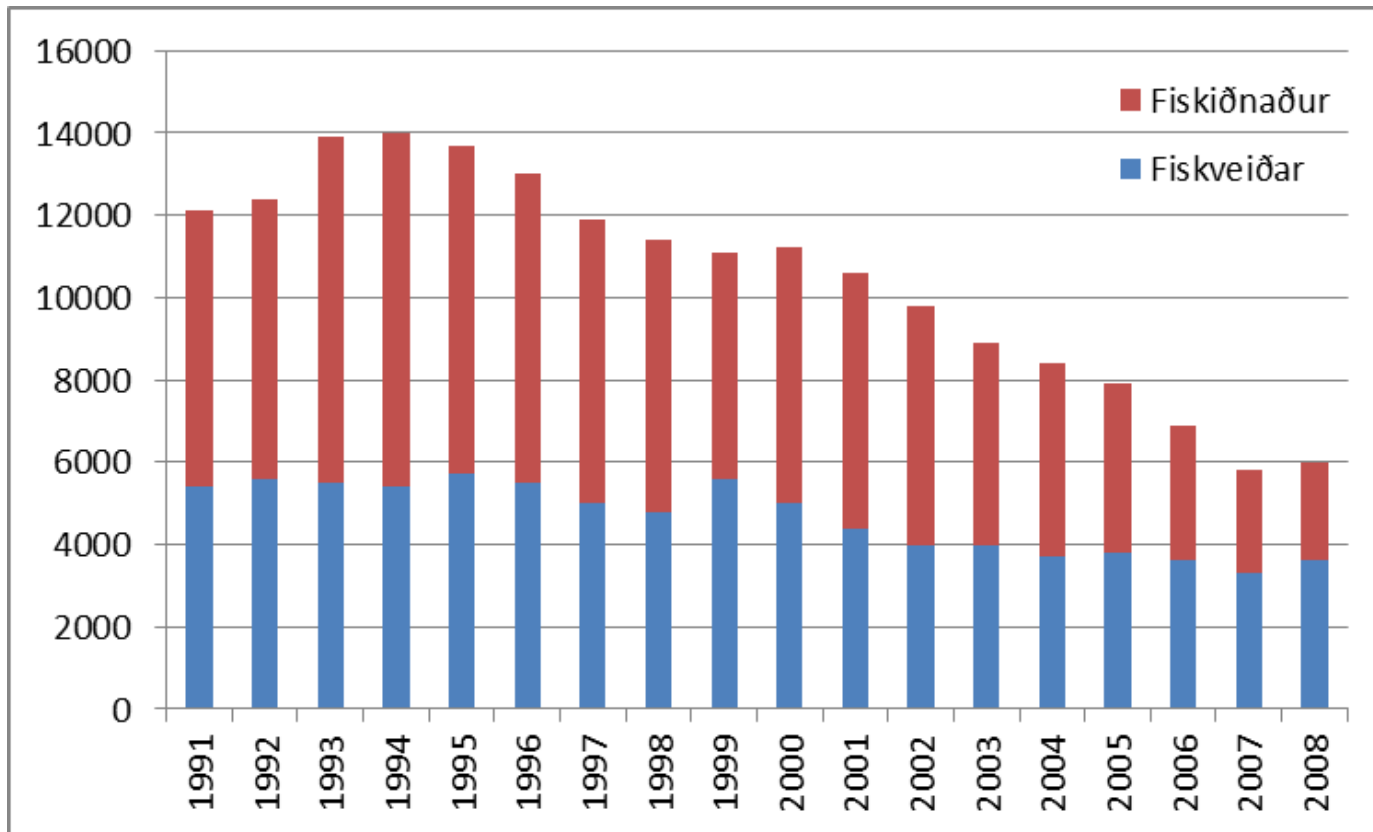
Tímabilið
1999-201

4



BYGGÐASTOFNUN

Fjöldi starfa í sjávarútvegi 1991-2008 á landsbyggðum



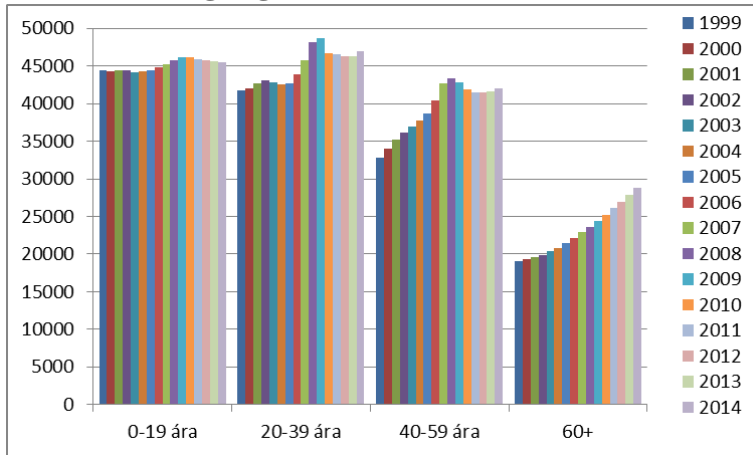
Hvað „þarf“

- Bakarí
- Verslun
- Samgöngur
- Veitingahús
- Bankaþjónusta
- Hárgreiðslustofa
- Internettengingar
- Tómstundaiðkun barna
- Iðnaðarmenn, smiðir, bifvélavirkjar, píparar ...
 - Heilsugæsla/læknisþjónusta
 - Tannlæknaþjónusta
 - Fjarnámsaðstaða
 - Tónlistarskóli
 - Félagsstarf
 - Grunnskóli
 - Íþróttahús
 - Sundlaug
 - Leikskóli

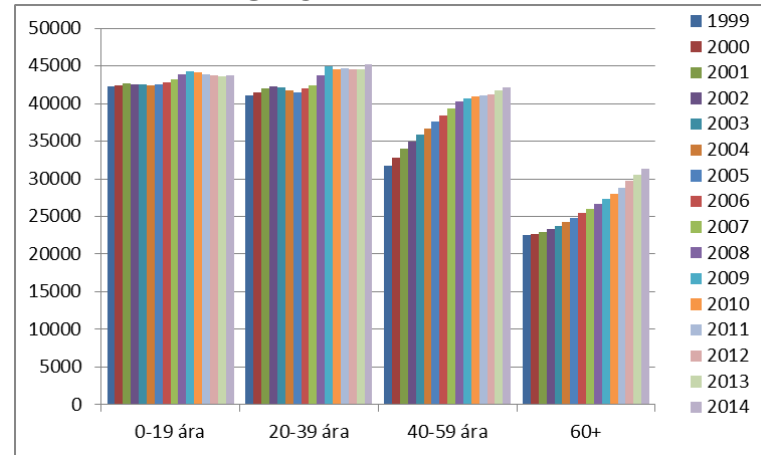


Mannfjöldapróun Landið allt

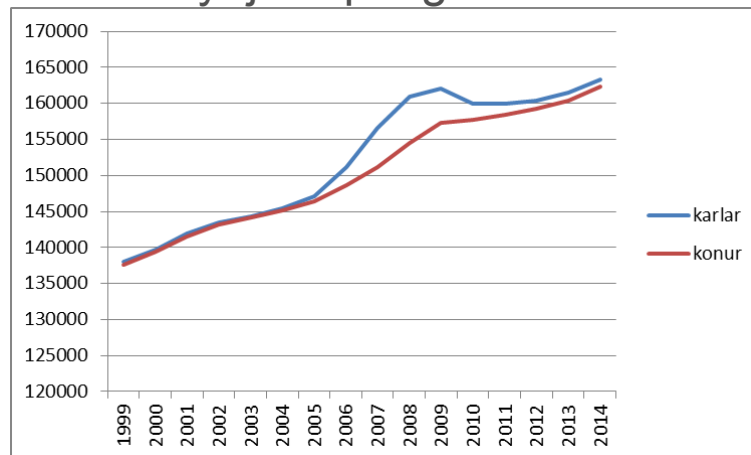
Karlar



Konur



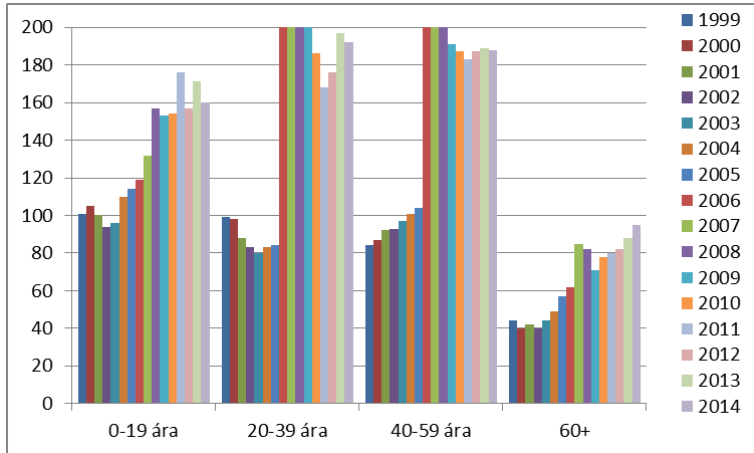
Kynjaskipting



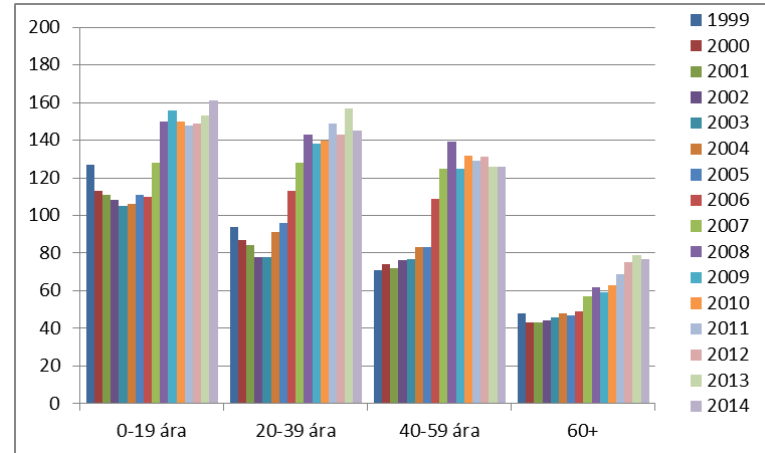
BYGGÐASTOFNUN

Mannfjöldapróun Reyðarfjörður

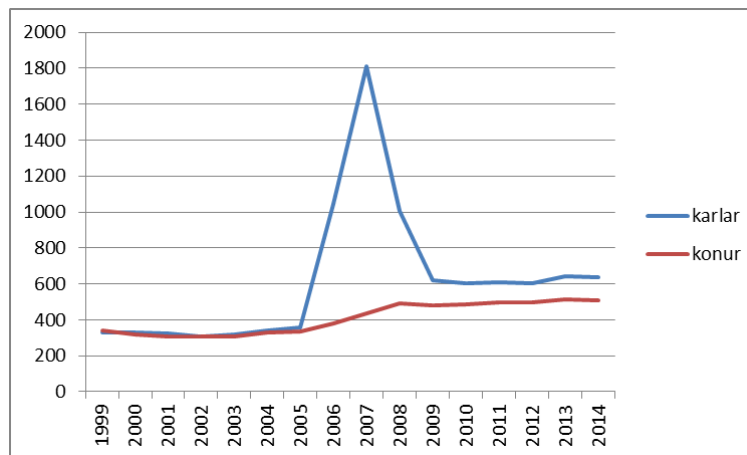
Karlar



Konur



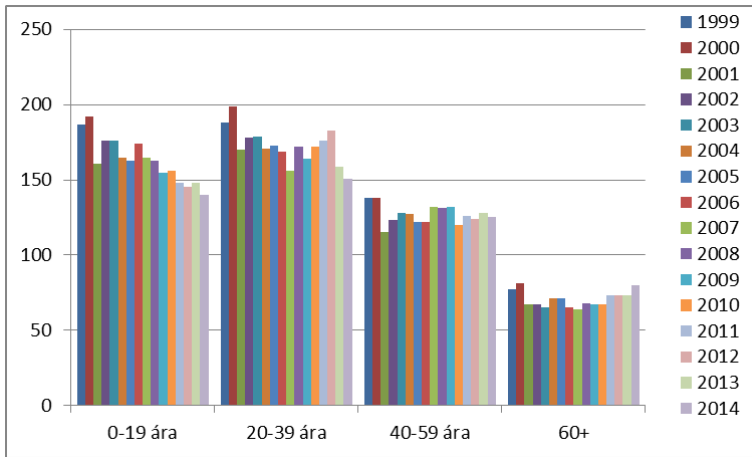
Kynjaskipting



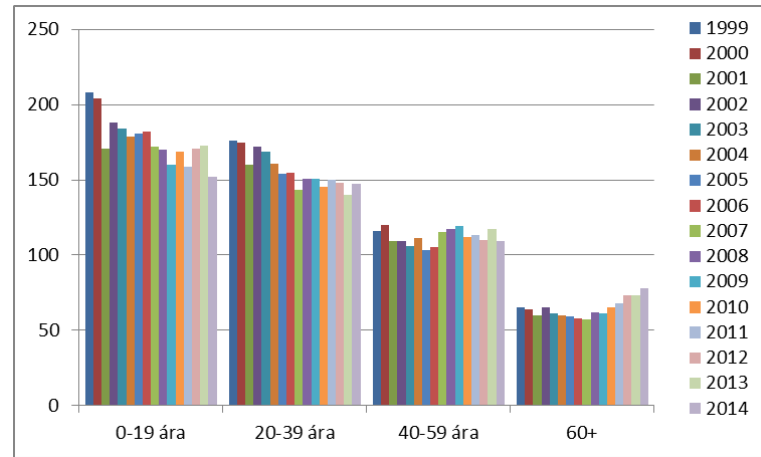
BYGGÐASTOFNUN

Mannfjöldapróun Ólafsvík

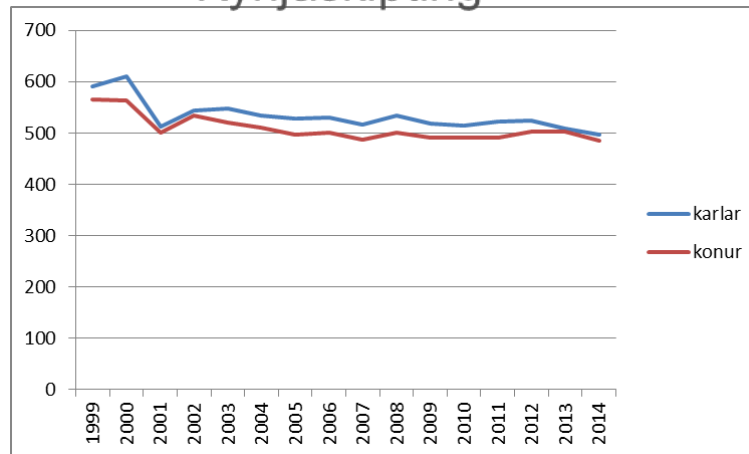
Karlar



Konur



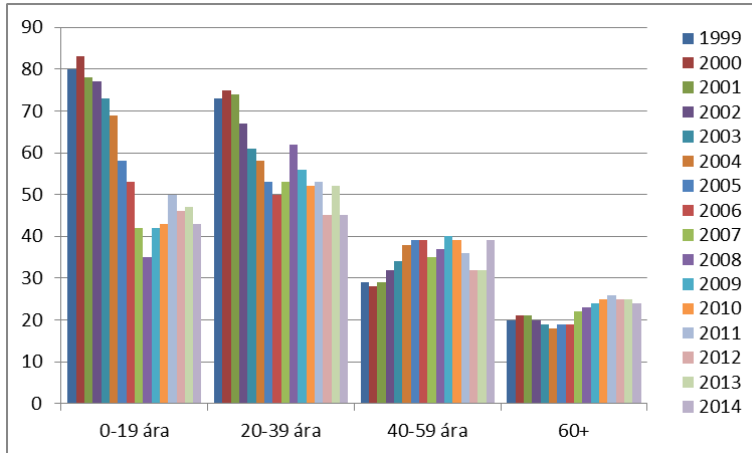
Kynjaskipting



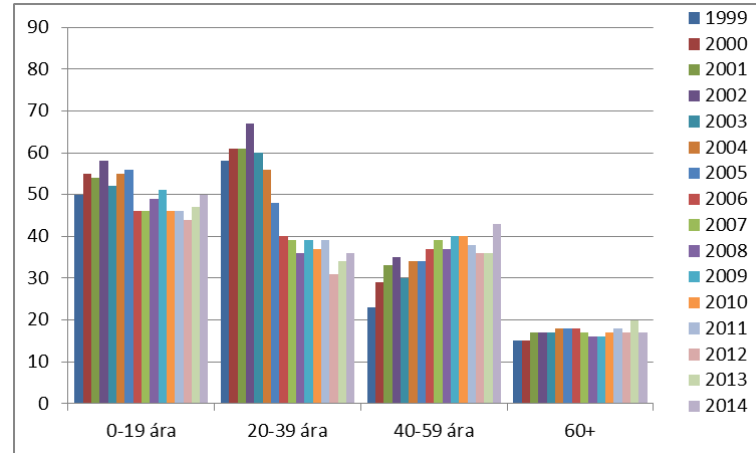
BYGGÐASTOFNUN

Mannfjöldapróun Tálknafjörður

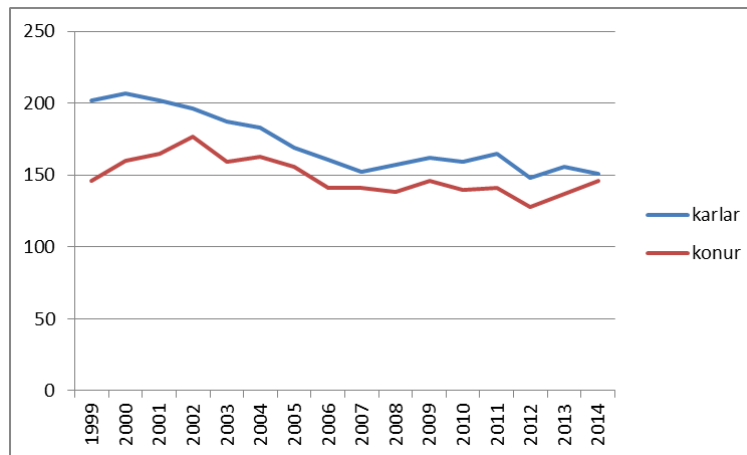
Karlar



Konur



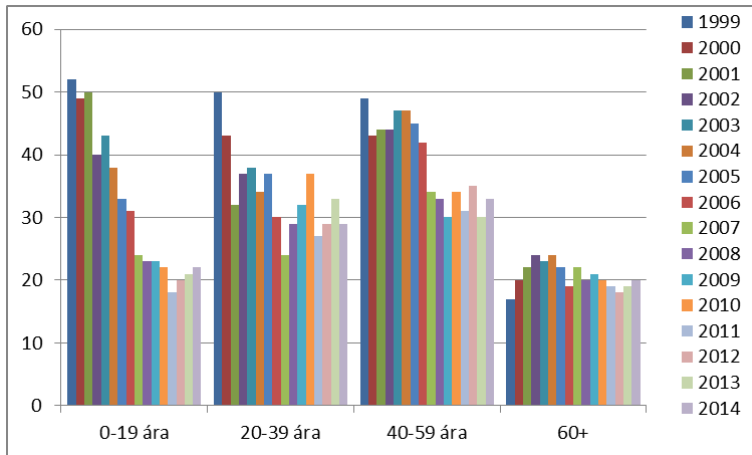
Kynjaskipting



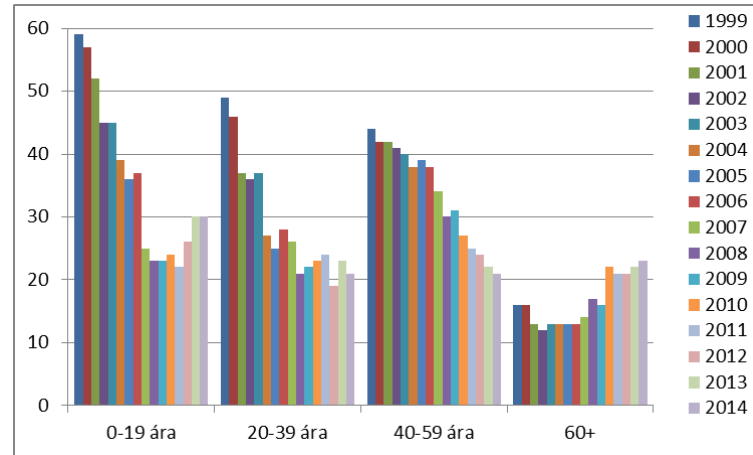
BYGGÐASTOFNUN

Mannfjöldapróun Bíldudalur

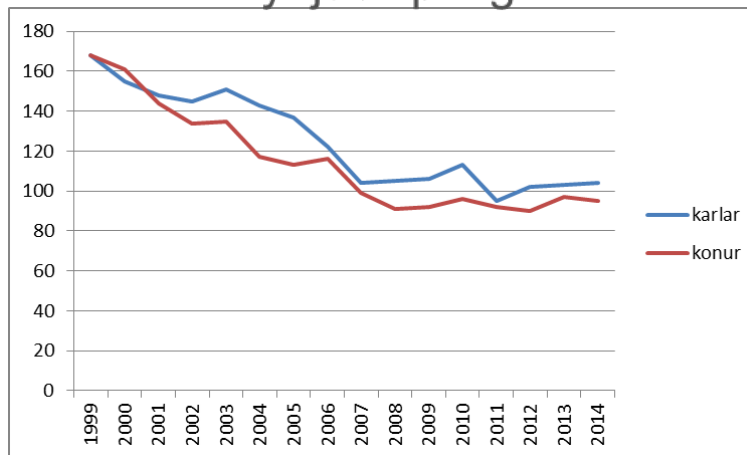
Karlar



Konur



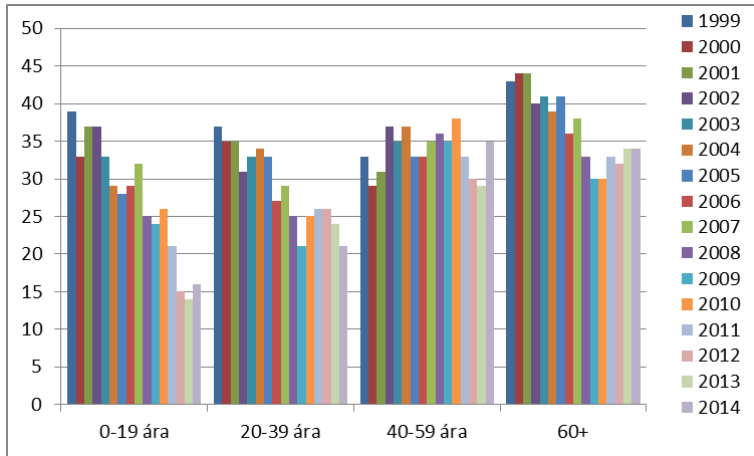
Kynjaskipting



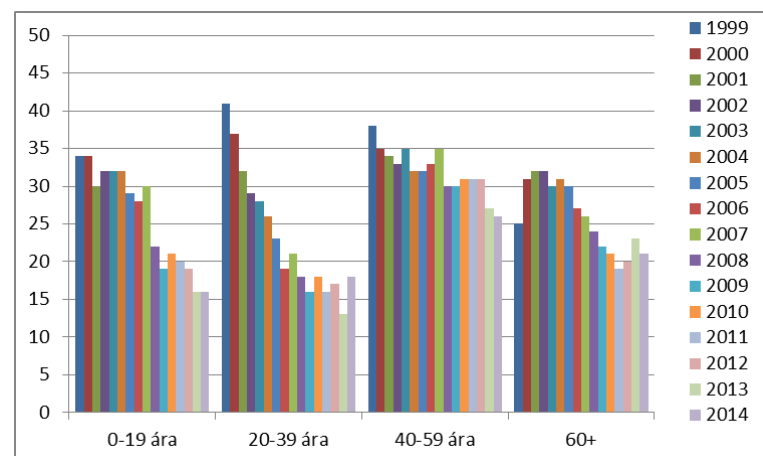
BYGGÐASTOFNUN

Mannfjöldapróun Breiðdalsvík

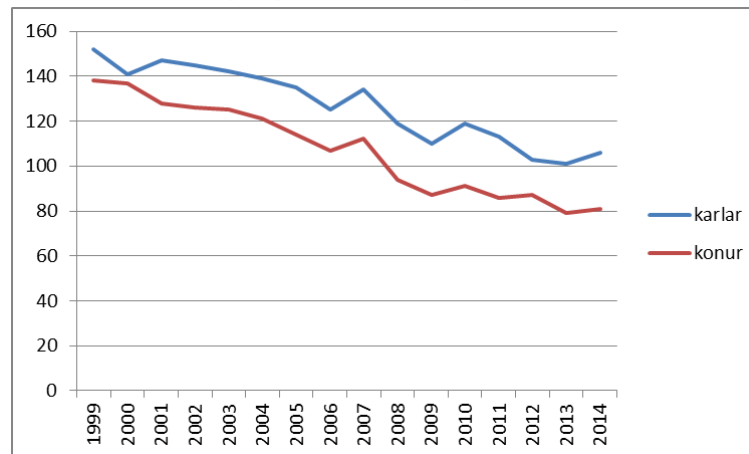
Karlar



Konur



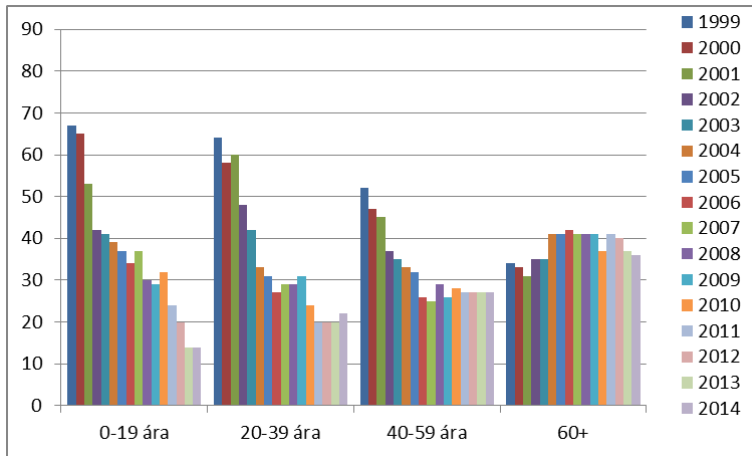
Kynjaskipting



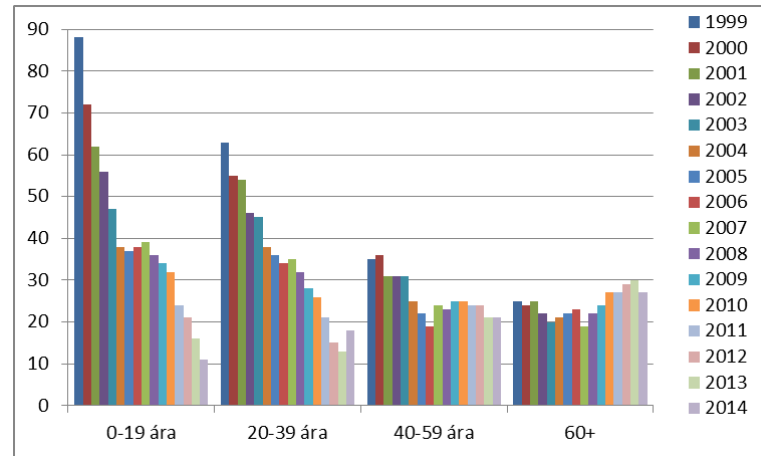
BYGGÐASTOFNUN

Mannfjöldapróun Raufarhöfn

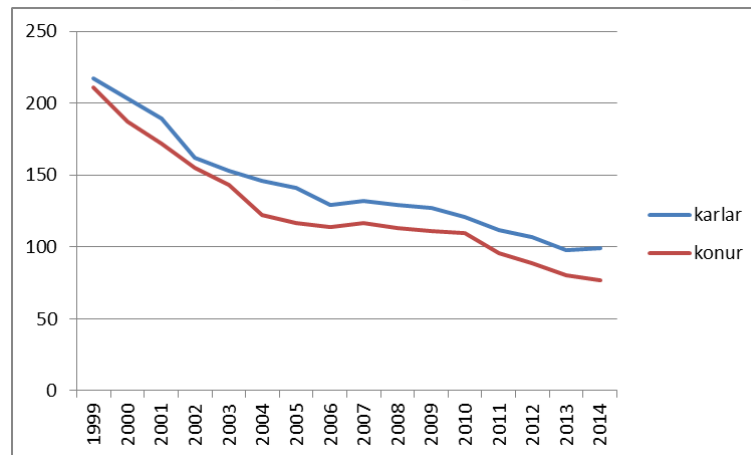
Karlar



Konur



Kynjaskipting



BYGGÐASTOFNUN

Erfitt að halda úti „þörfum“

- Bakarí
- Verslun
- Samgöngur
- Veitingahús
- Bankaþjónusta
- Hárgreiðslustofa
- Internettengingar
- Tómsundaiðkun barna
- Iðnaðarmenn, smiðir, bifvélavirkjar, píparar ...
 - Heilsugæsla/læknisþjónusta
 - Tannlæknisþjónusta
 - Fjarnámsaðstaða
 - Tónlistarskóli
 - Félagsstarf
 - Grunnskóli
 - Íþróttahús
 - Sundlaug
 - Leikskóli



Samantekt

- Fjórfoldun landsmanna síðustu 100 árin
- Fjölgunin aðallega bundin við stór-höfuðborgarsvæðið
- Fjölgun í sjávarbyggðum þar til á 9. áratug síðustu aldar

- Mjög mikil fækkun í mörgum minni sjávarbyggðum
- Óhagstæð aldursdreifing – ungu fólki fækkar mest
- Mannfjöldatréð stendur sums staðar á haus

- -> Þjónusta verður óhagkvæm --> framboð minnkar



„Er ekki allt í lagi?“

- Auknar kröfur fólks um þjónustu, hækkandi menntunarstig, sérhæfing vinnuafsisins og aukin fjölbreytni atvinnulífs, samdráttur og samþjöppun aflaheimilda, framleiðslubreytingar í sjávarútvegi hafa orðið til þess að margar sjávarbyggðir, sérstaklega þær minni, hafa orðið undir í samkeppninni um fólkið.
- Þetta hefur leitt af sér óhagstæða lýðfræðilega samsetningu íbúanna sem aftur er hamlandi þáttur varðandi framtíð margra sjávarbyggða.



Takk fyrir



Mynd: www.osvor.is



BYGGÐASTOFNUN